

# Foxy Brown

“The pin is mightier than the sword. -Fred Reinfeld

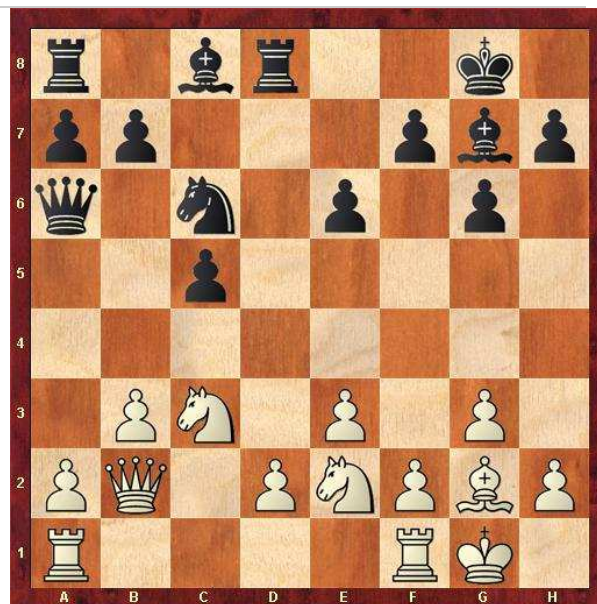
**T**his game features one of the most active players I have ever met, Dean Brown of Colorado Springs.

In the position on the right it is **Black to move**.

Answer below.

Looking at Dean Brown's [USCF Rating History](#) page, you can't help but be impressed at how many events he has played in.

Dean is also a real road warrior, and likes to "collect" counties. He tracks all of the counties that he has visited in the US. You can see a detailed map [here](#) of all the counties that Dean has visited.



Dean has attended the US Open on multiple occasions, and has served as the Colorado Representative to the delegates meeting for years. He helps to direct, organize, and run tournaments in Colorado. He was running quad tournaments at the US Air Force academy, which unfortunately had to be cancelled because of security concerns.

Dean is one of the nicest people you will ever meet, is a true lover of the game of chess, and does a great job with his contributions to the chess world.

Here is the complete game:

[Event "Winter Springs Open"]  
 [Site "Colorado Springs"]  
 [Date "2002.12.07"]  
 [Round "1.2"]  
 [White "Anderson, Paul"]  
 [Black "Brown, Dean W"]  
 [Result "0-1"]  
 [ECO "A34"]  
 [WhiteElo "1755"]  
 [BlackElo "1504"]

[PlyCount "126"]  
[EventDate "2002.12.07"]  
[EventType "swiss"]  
[EventRounds "4"]  
[EventCountry "USA"]

1. c4 Nf6 2. Nc3 g6 3. g3 Bg7 4. Bg2 c5 5. e3 O-O 6. Nge2 e6 7. b3 d5 8. cxd5  
Nxd5 9. Ba3 Qa5 10. Qc1 Nb4 11. O-O Nd3 12. Qc2 Nb4 13. Qc1 Nd3 14. Qb1 Rd8 15.  
Bb2 Qa6 16. Nc1 Nxb2 17. Qxb2 Nc6 18. N1e2 Qxe2 19. Rad1 Qd3 20. Bf3 Bd7 21.  
Qc1 Bxc3 22. dxc3 Qf5 23. Bg2 Rab8 24. e4 Qf6 25. f4 e5 26. Rd5 Qe7 27. f5 Qf8  
28. Qg5 f6 29. Qh4 g5 30. Qg4 Be8 31. Qe2 Ne7 32. Rdd1 b5 33. Bf3 h6 34. h4 Bf7  
35. hxg5 hxg5 36. Kf2 Rxd1 37. Rxd1 c4 38. b4 Rd8 39. Bh5 Rxd1 40. Bxf7+ Qxf7  
41. Qxd1 Nc8 42. Qd8+ Qf8 43. Qd5+ Kh8 44. Qxb5 Nd6 45. Qd5 Qd8 46. Kf3 Kg7 47.  
a4 Qc7 48. Qe6 a6 49. Qd5 Qb6 50. Qe6 Qd8 51. Qd5 Qd7 52. Qc5 Nxe4 53. Qe3  
Qxf5+ 54. Kg2 Kg6 55. b5 axb5 56. axb5 Nd6 57. b6 Qc8 58. Qf3 Qb7 59. Qxb7 Nxb7  
60. Kf3 Nc5 61. g4 Kf7 62. b7 Nxb7 63. Ke4 Ke6 0-1

You can play through this game [here](#).

**Answer:**

**18...Qxe2** wins a piece. The knight on c3 is pinned to the queen on b2, so cannot capture the Queen on e2. If **19. Nxe2 Bxb2**.

Happy Tactics!


Your Friend,



 Like **Tactics Time** on [Facebook](#).

 Follow **Tactics Time** on [Twitter](#).

 Check out the Tactics Time [Blog](#).

 If you know someone who could benefit from this, please feel free to forward it to them!

Not a subscriber yet? Like what you read?

Sign up to get future issues delivered straight to you at <http://tacticstime.com!>

© Copyright 2011-2012 Timothy Brennan, All Rights Reserved.